

PORTLAND[®] LEVEL Heavy - duty Seamless Floor

www.portlandchemical.com e-mail portland@portlandchemical.com

PORTLAND LEVEL is color pigmented powder ready to mixed with 25% mixing water by weight of the powder to become polymer mortar, pouring and trowel on pre-placed concrete floor to become seamless topping terrazzo. After trowel, the polymeric mortar re-adjust level by gravitational force to become no slope no convex and concave horizontal smooth flooring and become polymer monolithic co-matrix micro-structure floor. (For slope flooring, mixing waters should be reduced.)

FEATURES

- One of The Most Cost Efficient
- Seamless Flooring
- No Cracks, No Stains
- High Durability
- High Abrasive Resistance
- Water & Weather Proof
- Freeze thaw and Frost Proof
- Protect Fungi & Bateria
- Anti - Slip Smooth Surface
- Thiner Membrane
- Self Leveling
- Unlimited Floor Area
- High Compressive Strength
- High Flexural Strength
- High Bonding Strength
- High Corrosion Resistance
- Chemical Resistance
- Physiologically Harmless
- Semi Rigid & Resilience
- Ultra Violet (UV) Resistance

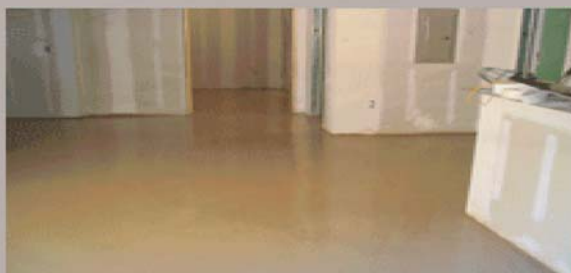
WHERE TO USE

Exhibition Hall, Sport Stadium, Industrial Plant, Ware House, Condominium, Office Building, Hospital, Airport Building, Department Store, School, Housing, Hotel, Laboratory, Sanitary Facility, Cars Park, Food & Dairy Processing Plant, Mass Transit, Pavement, Roof Deck, Traffic Signal, etc.

PORTLAND LEVEL compare to others, beside have self leveling capability but also more resilience and tough by the monolithic co-center matrix of micro structure increase water tight closed air cells inspite of water emission gel pores and water filled capillary pores which break out by expansion when frost.

HOW TO USE

1. Seal of the application area.
2. Mix PORTLAND LEVEL with water 25% by weight
3. Pour, trowel and let gravitational force to self adjust the level.
4. For color topping apply floor finishing. (twice)
5. For underlay cover with tiles.
6. For zero drainage for drainage should locate at the lowest level.

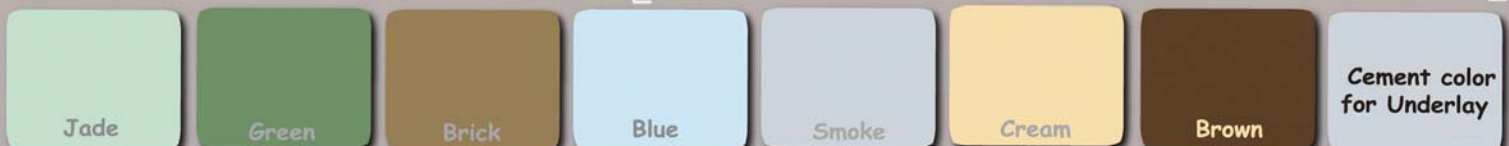


RECOMMEND FLOOR FINISHER

General transparent solvent base 20% to 30% of Acrylic type can be used for higher concentration can be dilute by thinner such as:

| | |
|---|-----|
| Methylmethacrylate (MMA), Ethylacrylate copolymer | 25% |
| Solvents Xylene 4 : Methanol 1 | 75% |

Apply twice before use and once when maintenance



Manufacturing by :

Portland Co.,Ltd.

299 - 305 Mahaprutharam Rd, Bangrak, Bangkok Thailand 10500
Tel.(662) 236-3206-7 ,639-0124-8 Fax.(662) 233-3465

MIRROR IMAGE SELF LEVEL, SEAMLESS POLYMER FLOOR

*Marbles, Ceramic Tiles, Granites, Vinyl, Paget, Veneer,
Carpet, Rug etc., Substitute*

Mix Designed Formulation

| Both Ready Mixed or Ready To Mix Mortars | Kg |
|---|-----------|
| Cements or Binders | 100 |
| Sand 0 to 2 mm. | 300 |
| Portland Fluidifier(1% of Binder) | 1 |
| Cement Color Pigments | variable |
| Water (W/B ratio 0.55-0.6) | 55-60 |

Mirror Image Finishing

7 days after Flooring, Using ordinary Floor Polisher with Scotch Bright Fine Abrasive Mob with Coolant, follow by Mirror Image Polishing with Polishing Bob and Greased Coolant.